

General Pipe Dolly

A one-piece body with adjustable rollers easily accommodates for pipe diameter sizes from 3" to 30". When used in pairs, pipe is safely supported and rotated and assists in multiple welding tasks.



Dolly

General Pipe Tongs

Strongly built for rugged pipeline construction conditions, General Pipe Tongs feature grip pads made for safe, positive pipe engagement and are field-replaceable. The tongs automatically release when the lift line slacks off the pipe. General Pipe Tongs are available in sizes 2" to 36" with models for both steel and cast-iron pipe.



Tongs

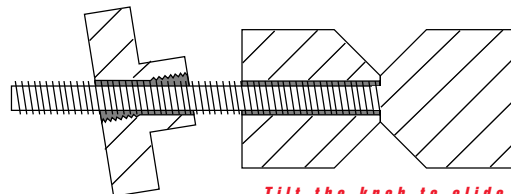
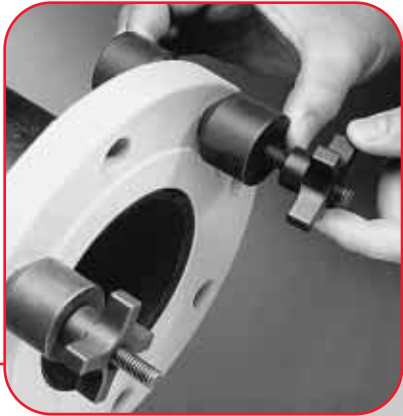
Quick-Acting Flange Pins

With H&M's Quick-Acting Flange Pins start welding in minutes with very little fit-up time. Endless threading and unthreading of flange pins are now completely eliminated.

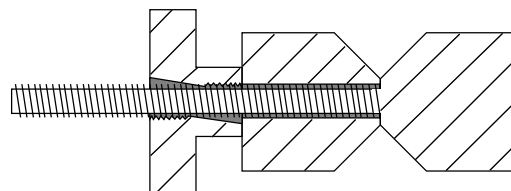
The secret is in the knob. Just tilt the knob to bypass the flange pin threads, then straighten the knob to grip the threads for tight, positive clamping.

Removal is just as quick and easy. Loosen the knob, tilt and remove.

These precise, conical flange pins provide perfect centering on $\frac{5}{8}$ " to $1\frac{1}{2}$ " bolt holes. Try a set of H&M Quick-Acting Flange Pins and experience why they are a "hole" lot better.



Tilt the knob to slide in and out.



Straighten the knob to engage the threads for clamping.

H&M